

## Configuring

# Alarms settings for MXx 1.2 devices

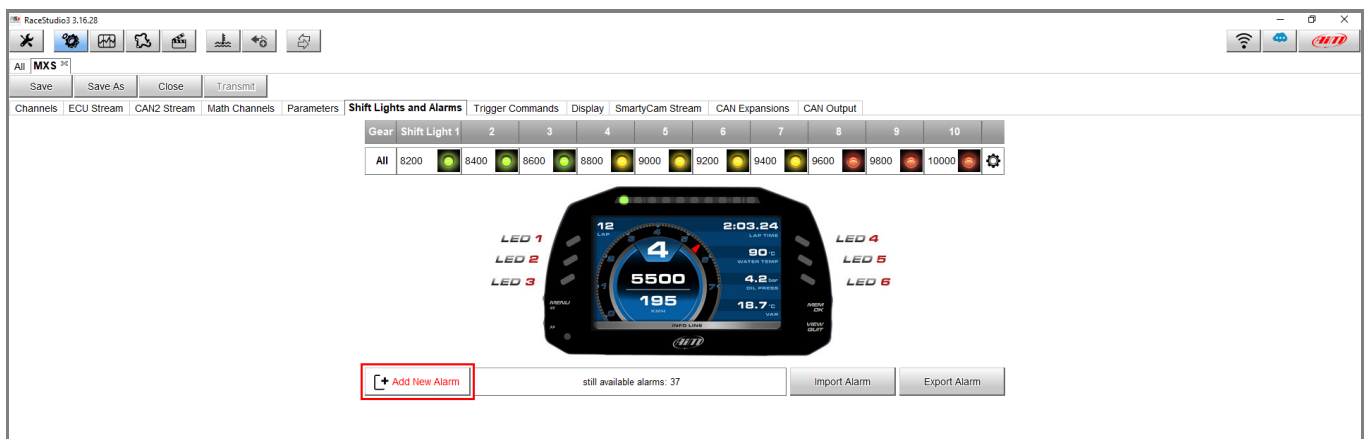
### Question:

What kind of alarms can I set on my MXx 1.2 device?

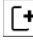
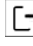
### Answer:

It is possible to set the MXx 1.2 devices alarms through Race Studio 3 in the following way:

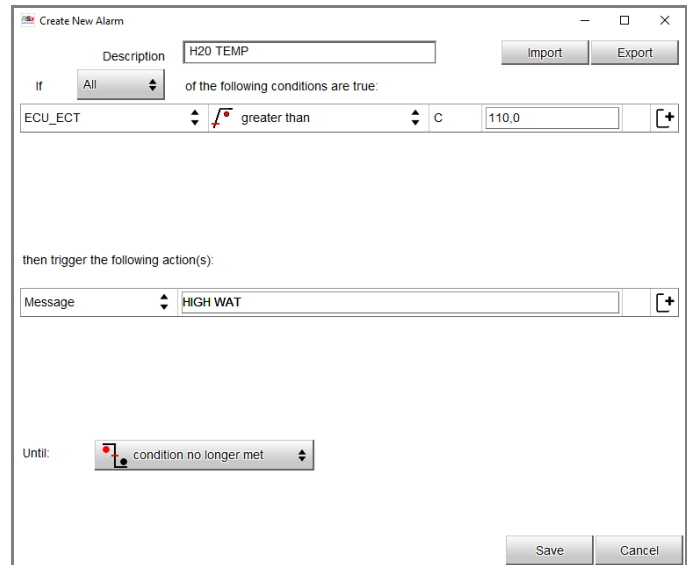
- Open Race Studio 3.
- Connect your device (via Wi-Fi or USB): it will appear in the Connected Devices list.
- From the Configuration section, select an existing or create a new one, selecting the device type and adding a name and an optional comment: click OK and the software will open the "Channels" tab.
- Once each channel is set, enter in the "Shift Lights and Alarms" tab, where it is possible to set the device alarms, clicking "Add New Alarm".



## Configuring

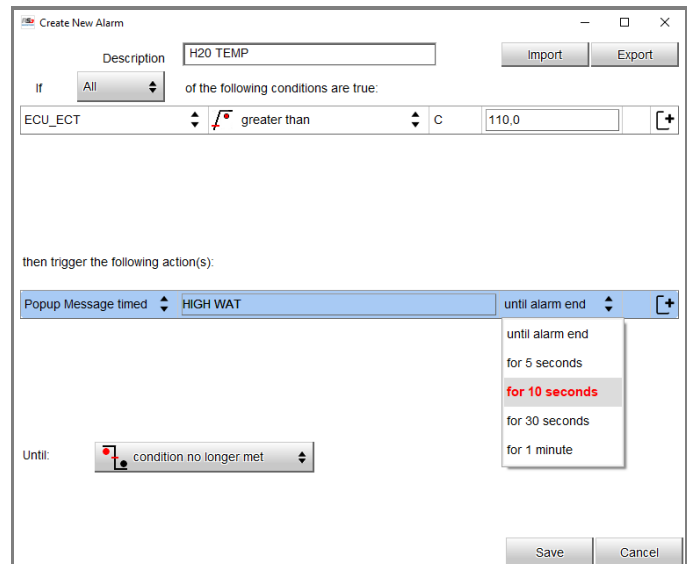
- after a name has been assigned to the alarm and conditions have been set, involving the wanted channels (it is possible to add/remove a condition clicking  and ) from the drop-down menu it is possible to choose the associated action type:

- **Message** (selected by default): it is possible to insert a text that will appear in the lower display zone in a red stripe.



The screenshot shows the 'Create New Alarm' dialog box. The 'Description' field contains 'H2O TEMP'. The 'If' section is set to 'All' and lists a condition: 'ECU\_ECT' greater than '110.0' C. The 'then trigger the following action(s):' section has 'Message' selected with the text 'HIGH WAT'. The 'Until:' section is set to 'condition no longer met'. 'Save' and 'Cancel' buttons are at the bottom.

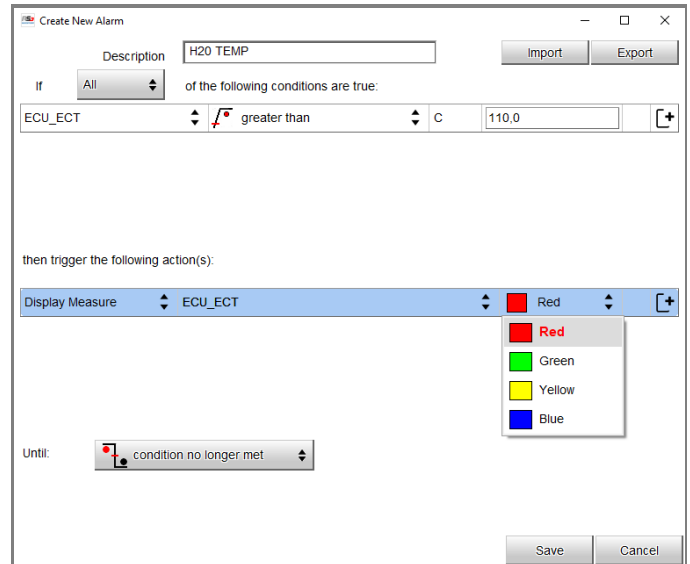
- **Popup Message Timed:** it is possible to insert a text that will fill an appearing popup window, occupying the whole display, and set the message lasting time.



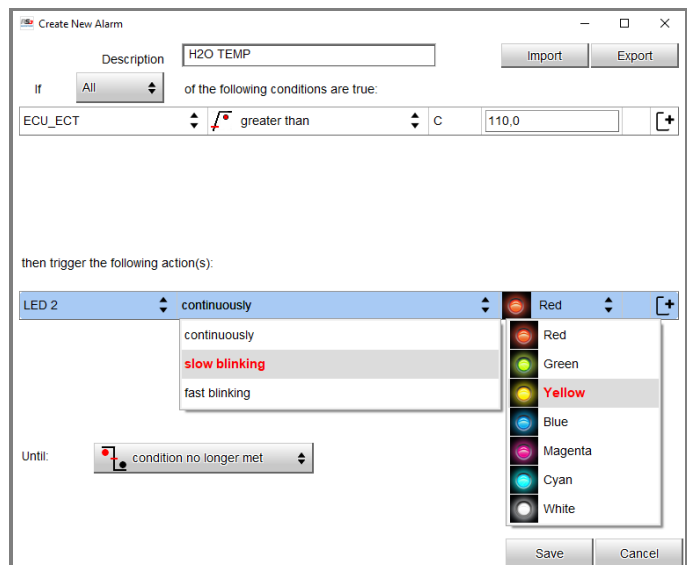
The screenshot shows the 'Create New Alarm' dialog box. The 'Description' field contains 'H2O TEMP'. The 'If' section is set to 'All' and lists a condition: 'ECU\_ECT' greater than '110.0' C. The 'then trigger the following action(s):' section has 'Popup Message timed' selected with the text 'HIGH WAT'. A dropdown menu is open next to it, showing options: 'until alarm end', 'for 5 seconds', 'for 10 seconds' (highlighted in red), 'for 30 seconds', and 'for 1 minute'. The 'Until:' section is set to 'condition no longer met'. 'Save' and 'Cancel' buttons are at the bottom.

## Configuring

- Display Measure:** it is possible to assign a color to the display measure regarding the verified event. Select a channel and choose a color for the displayed measure

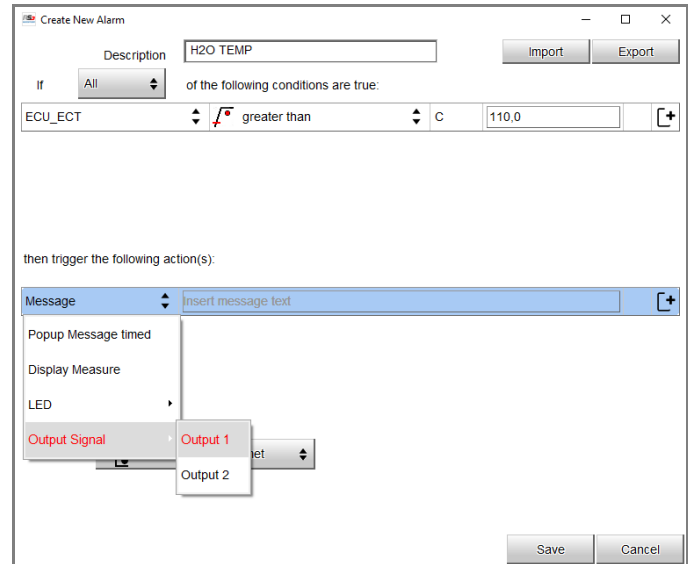


- LED:** it is possible to select one of the available LEDs, modifying its properties, so choosing to make it turn on steady or making it blink slow/fast and selecting one of the available colors.



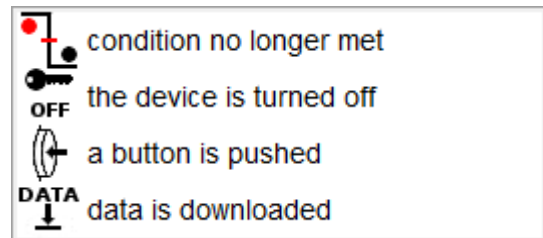
## Configuring

- **Output Signal:** it is possible to drive an external device or relay through the available digital outputs. The maximum current rate is limited to 1A.



The “Until” labelled drop-down menu allows to set the alarm reset condition. It is possible to nullify the alarm action:

- when the condition is not verified anymore
- when the vehicle is switched off
- when a button is pushed
- when recorded data are downloaded



N.B.: the alarm reset condition **does not involve** the Popup Message Timed, since its reset time can be chosen from the dedicated bar.