

AiM USB Driver Install on Windows Vista®

While Windows Vista is not yet officially supported by AiM Sports, this document will aid you installing the AiM USB driver on Windows Vista. This procedure has been tested on Windows Vista Business version and Windows Vista Ultimate version.

Step 1

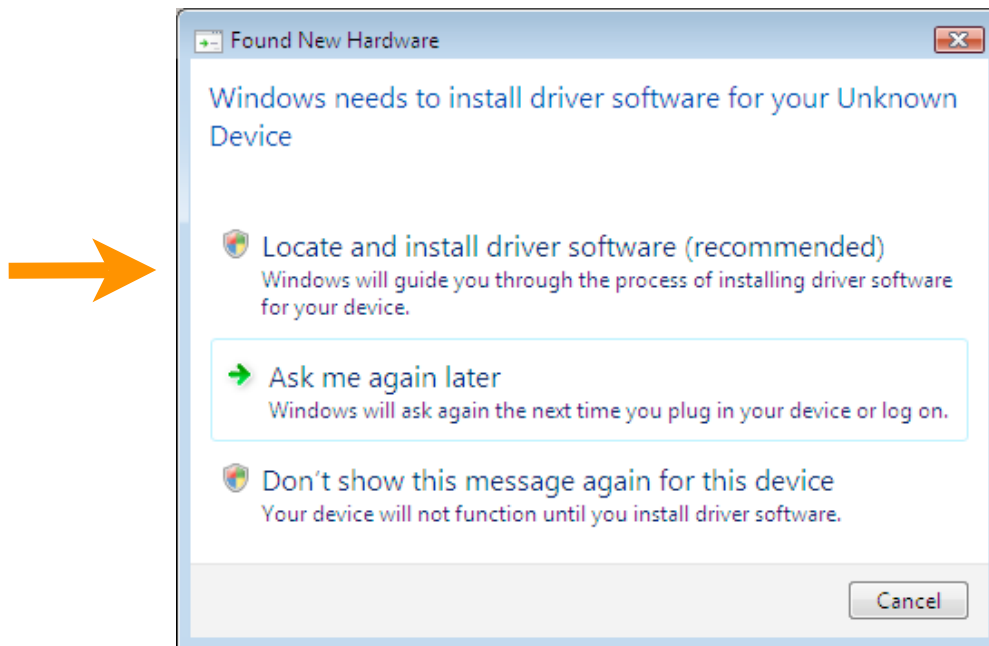
Install a current version of Race Studio 2™ or DragAnalyzer™.

Step 2

Connect your AiM instrument to your PC's USB port, and power on.

Step 3

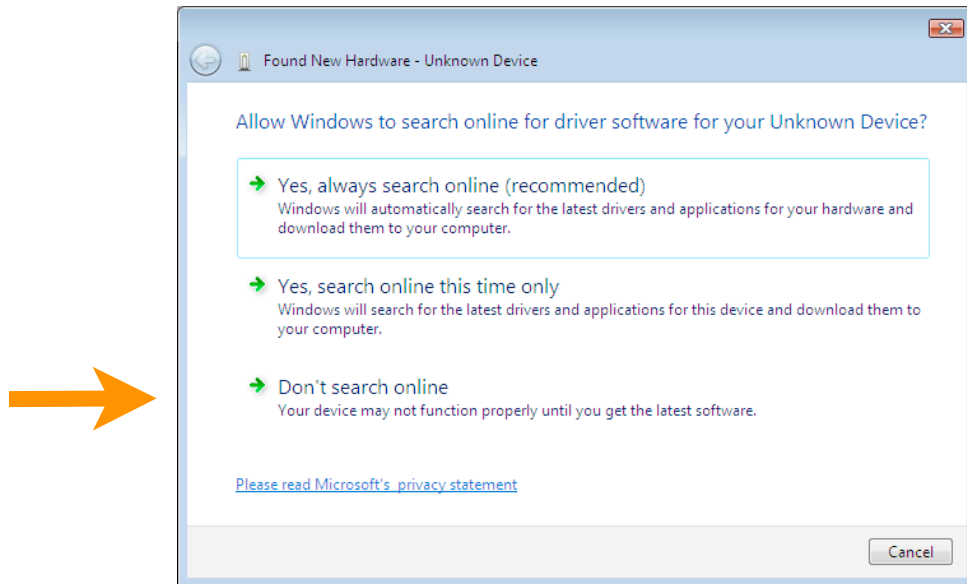
The *Found New Hardware* window should open up after a brief delay.



- Click the “Locate and install driver software (recommended)” option.

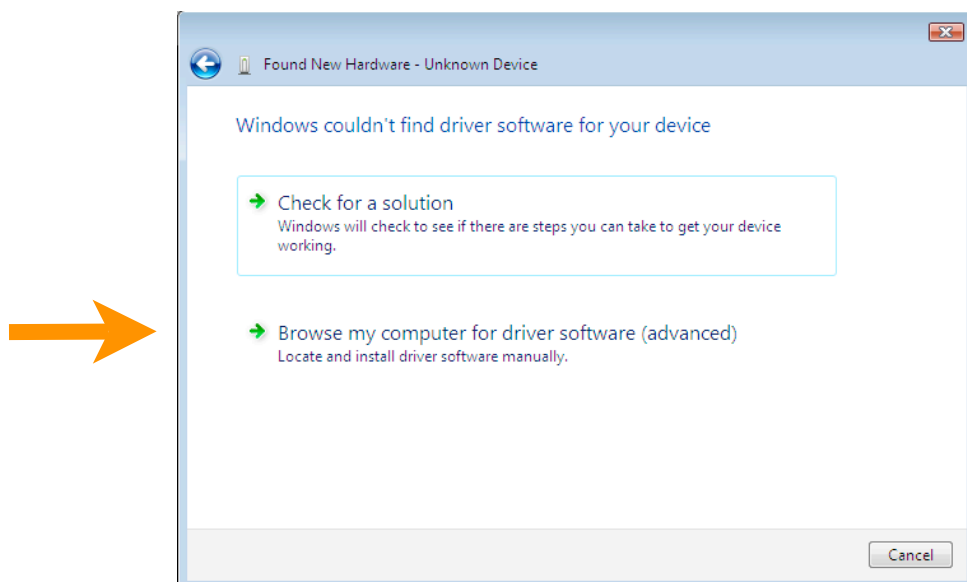
Step 3 (continued)

You will then be presented with the **Found New Hardware - Unknown Device** window.



- Click the “Don’t search online” option.

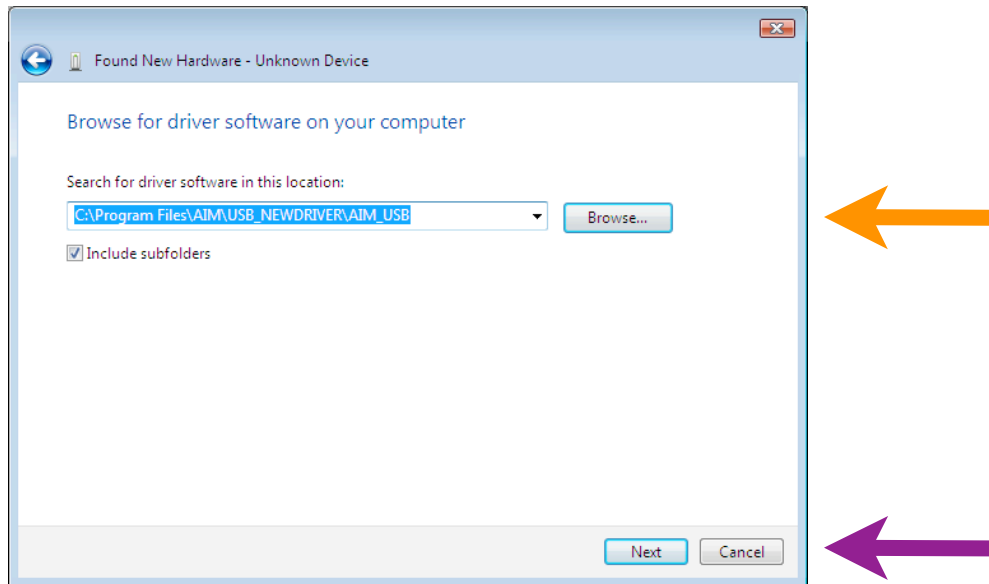
You will then be prompted with the window below, alerting you that Windows has not yet found a driver.



- Click the “Browse my computer for driver software (advanced)” option.

Step 3 (continued)

You are then prompted with a window that allows you to specify a location for Windows to search for the correct driver on your computer.



The simplest option is to...

- Click the Browse button and navigate to:

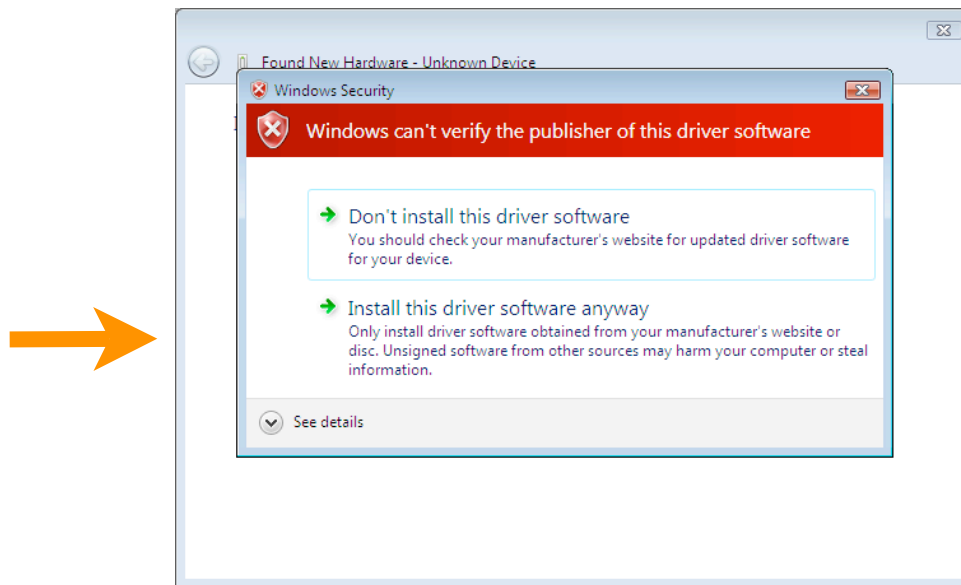
Program Files > AIM > USB_NEWDRIVER > AIM_USB

...as in the image, you can also type the complete path in. The “Include subfolders” checkbox should be checked by default.

- Click the Next button.

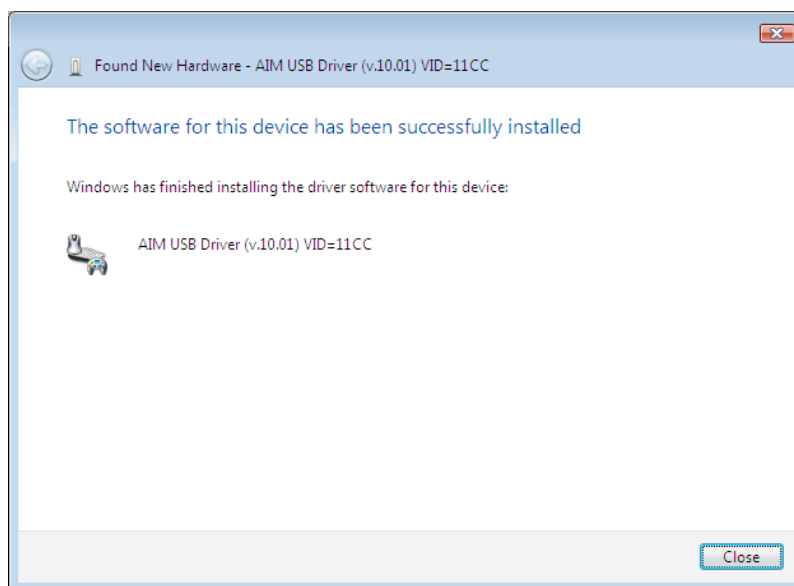
Windows will then search the path you chose above for the AiM USB driver and when it finds the AiM USB driver, you will be prompted with a warning. *Continued on next page...*

The Windows Security Window alerts you that the publisher of the driver, AiM, cannot be verified.



- Click “Install this driver software anyway”

Windows will then copy some files from one location on your computer to another and you will be shown the successful installation window at completion.



- Click the Close button and your AiM instrument is ready to use!