

Configuring

Alarms settings for EVOx devices

Question:

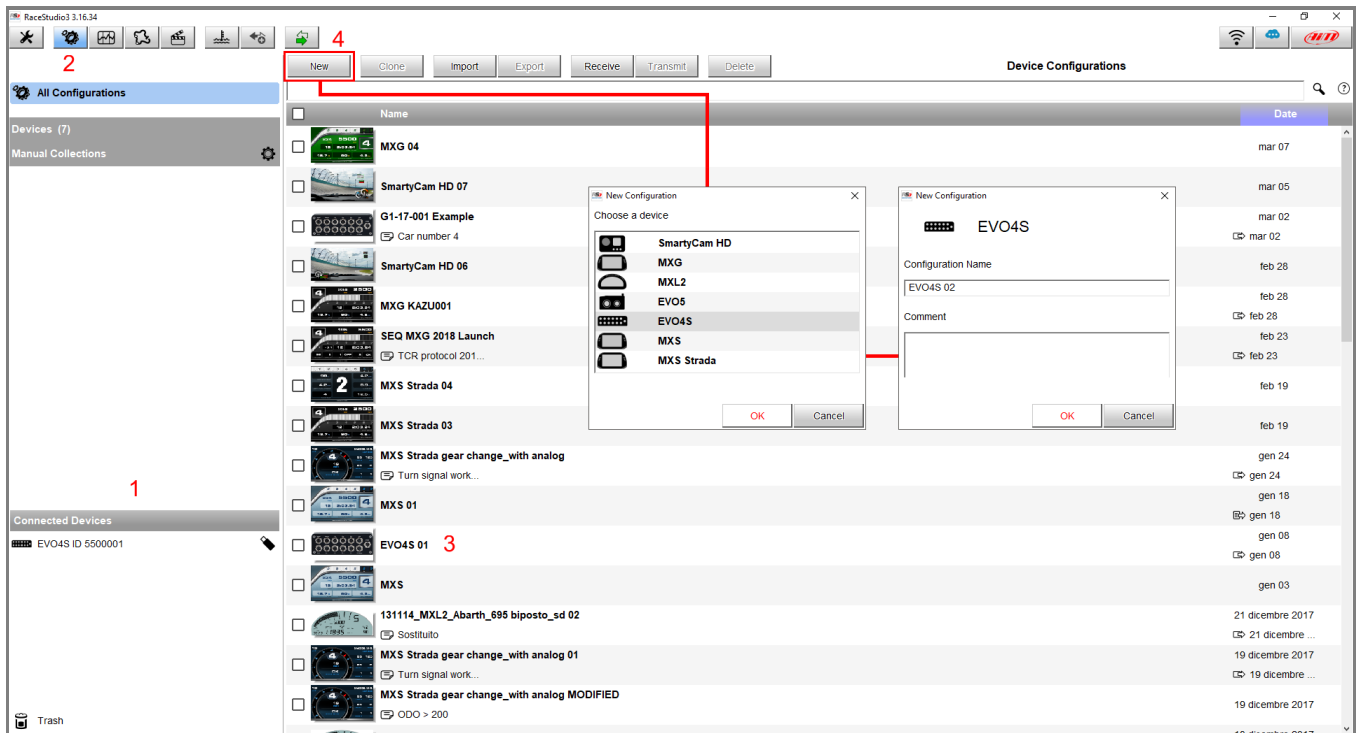
What kind of alarm and actions can I set on my EVOx device?

Answer:

EVOx devices can trigger 1 or 2 digital outputs, if connected to an optional AiM dash (GS-Dash or Formula Steering Wheel 3), additionally to alarm LEDs and popup messages.

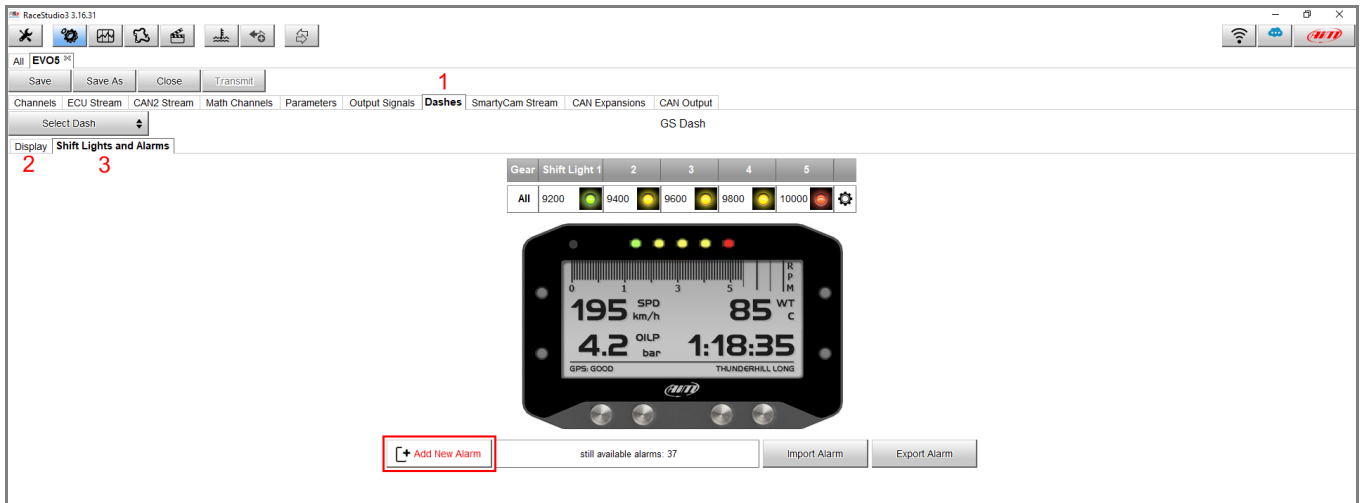
Set EVOx devices alarm LEDs through Race Studio 3 in the following way:

- open Race Studio 3
- connect your device (via USB or Wi-Fi, if available): it will appear in the Connected Devices list (1; following image)
- from the Configuration section (2), select an existing configuration (3) or create a new one (4), selecting the device type and adding a name and an optional comment: press OK and the software will open the "Channels" tab



Configuring

- once each channel is set, enter in the "Dashes" tab (1; following image), select the connected dash and set the Display pages (2) or the Shift Lights and Alarms (3).



- in the Shift Lights and Alarms add new alarm, after a name has been assigned and the conditions have been set, using the desired channels (add/remove more conditions clicking **[+]** and **[-]**), from the drop-down menu it is possible to choose the associated action type

Configuring

1. Alarm actions in EVOx device:

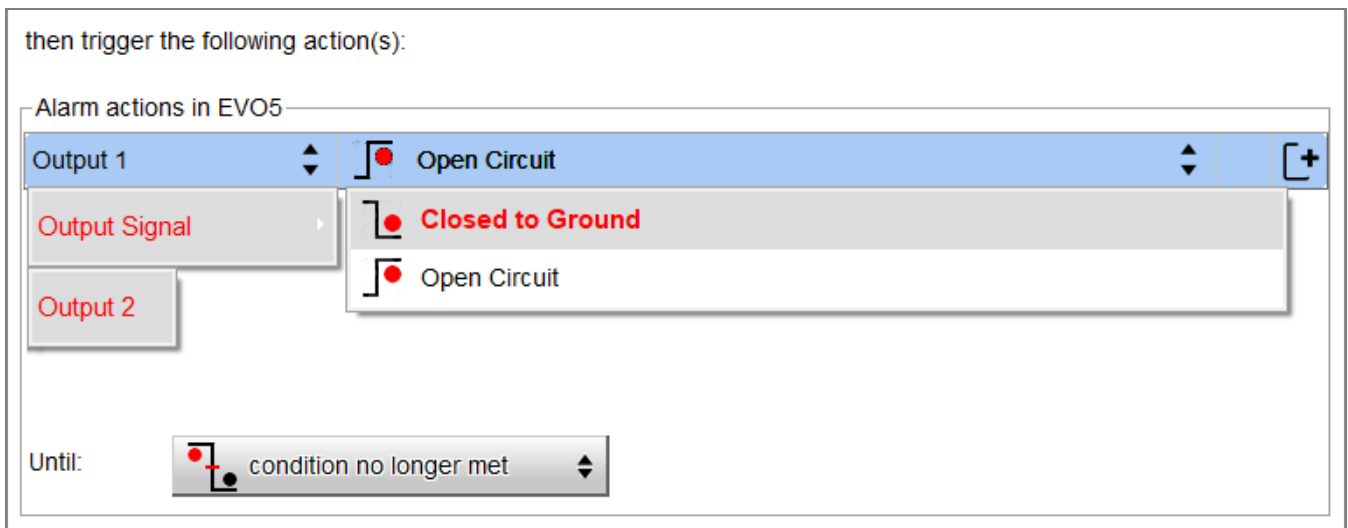
- **Output 1 / 2:** controls the output signal(s) which activates an open circuit or a switch to ground, this is used to drive external devices (es. Lamp, fan ecc...)

then trigger the following action(s):

Alarm actions in EVO5

Output 1	Open Circuit
Output Signal	Closed to Ground
Output 2	Open Circuit

Until: condition no longer met



This function can also be accessed from the Output Signals tab of Race Studio 3: this is mainly used when no dash is connected to EVOx.

Configuring

2. Alarm actions in the visor (if connected):

- **Popup Message Timed:** it is possible to insert a text that will appear in a full display popup window, and set its lasting time



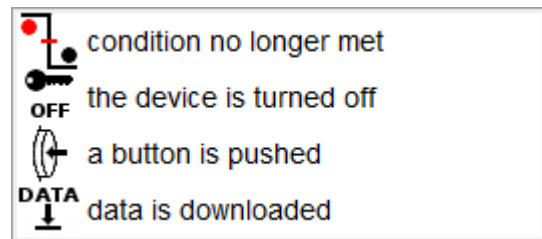
- **LED:** it is possible to select one of the available LEDs, choosing a blinking pattern (solid, slow blink, fast blink) and one of the 7 available colors



Configuring

The “Until” labelled drop-down menu allows to set the alarm reset condition. The alarm is automatically reset in one of the following ways:

- when the condition is not verified anymore
- when the vehicle is turned off
- when the driver pushes a button
- after recorded data have been downloaded



N.B.: the alarm reset condition does not involve the Popup Message Timed, since its timing is set independently from its configuration bar.