

Porsche GT3 Cup Plug&Play kit



Racing Data Power

INTRODUCTION

The P&P kit specifically designed for Porsche GT3 Cup – including an **ECU Bridge** with a Deutsch connector for immediate plug into the engine control unit (ECU) network – makes **SmartyCam** connection and activation very easy.

In fact, it is enough to connect the **ECU Bridge** to the vehicle socket – as detailed in this document – to get all desired values from the engine control unit and record/overlay them on **SmartyCam** videos.

INDEX

Chapter 1 – Plug&Play kit	4
1.1 – Car models	4
1.2 – The kit	4
1.3 – The optional	4
Chapter 2 – Connections.....	5
2.1 – Connecting SmartyCam to ECU Bridge	5
2.2 – Connecting ECU Bridge to Porsche GT3 Cup	5
Chapter 3 – Select the configuration.....	6
Chapter 4 – ECU communication protocol.....	7
Appendix A – Porsche Cup ECU Bridge pinout.....	8
Appendix B – Part numbers.....	9

Chapter 1 – Plug&Play kit

1.1 – Car models

Plug& Play kit for Porsche Cup is available for these car models:

- 997 GT3 Cup
- 997 GT3 Cup S
- 996 GT3 Cup (2002/2005)

1.2 – The kit



- 1 – SmartyCam; (1)
- 1 – ECU Bridge for Porsche GT3 Cup; (2)
- 1 – 2m or 4m CAN cable;(3)

1.3 – The optional



Roll bar bracket kit includes:

- 1 – ball head
- 1 – 60 mm. arm
- 1 – roll bar kit
- 1 – washer



CAN cable with external microphone

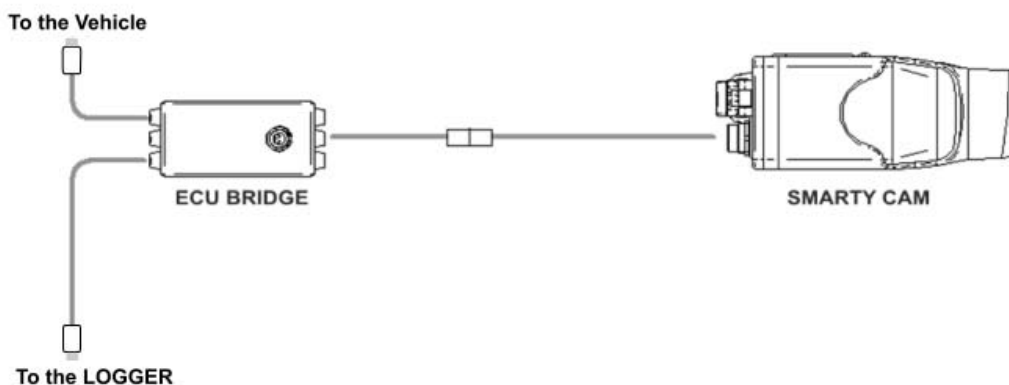
Chapter 2 – Connections

To receive the info provided by the vehicle ECU it is necessary to go through two steps.

Step 1 – Connect SmartyCam to ECU Bridge

Step 2 – Connect ECU Bridge to the vehicle

2.1 – Connecting SmartyCam to ECU Bridge



To connect **SmartyCam** to **ECU Bridge**:

- Connect the 7-pins female connector placed left on **SmartyCam** back to the 2m or 4m power + CAN cable supplied with the kit (see above scheme).

2.2 – Connecting ECU Bridge to Porsche GT3 Cup

To connect the ECU Bridge to the vehicle:

- plug the 5-pins male connector of **ECU Bridge** into the 5-pins female Deutsch socket placed near the ECU (see below images).

Furthermore – If the vehicle is equipped with a data acquisition system – connect the 5 pins female connector of ECU Bridge to the logger.





Chapter 3 – Select the configuration

Once **ECU Bridge** is properly connected, it is necessary to configure it in **Race Studio 2** software. Please follow these instructions:

- Run **Race Studio2** Software;
- create a configuration pressing **“New”**;
- select **“Bosch”**; from **“ECU manufacturer”** drop down menu;
- select from **“ECU Model”** drop down menu: **“MS3”**;
- select **“SmartyCam Function setting”** to set **SmartyCam** channels (refer to **Race Studio Configuration** manual for more details);
- transmit the configuration to **AIM** logger clicking **“Transmit”**.

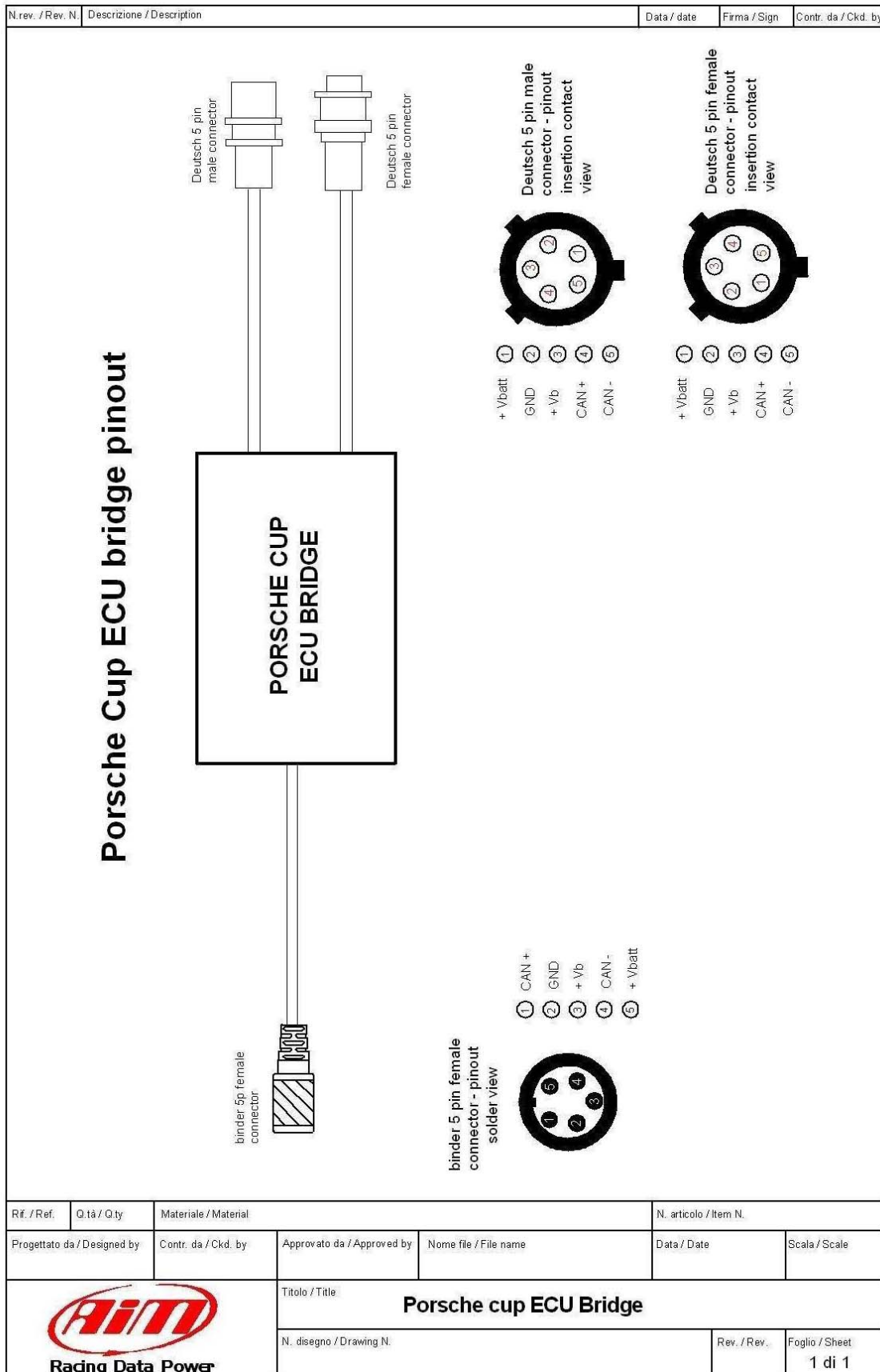
Note: it is suggested to disable these channels that are not in use.

Chapter 4 – ECU communication protocol

Channels received by **ECU Bridge** connected to **Porsche 997 GT3 Cup, 997 GT3 Cup S, 996 GT3 Cup (2002/2005)** Bosch MS3 ECU are:

ID	CHANNEL NAME	FUNCTION
ECU_1	BOSCH_RPM	RPM
ECU_2	BOSCH_SPEED1	Speed1
ECU_3	BOSCH_SPEED2	Speed2
ECU_4	BOSCH_OIL_PRESS	Oil Pressure
ECU_5	BOSCH_FUEL_PRESS	Fuel Pressure
ECU_6	BOSCH_ATM_PRESS	Atmospheric Pressure
ECU_7	BOSCH_FUEL_TEMP	Fuel Temperature
ECU_8	BOSCH_OIL_TEMP	Oil_ Temperature
ECU_9	BOSCH_ENGINE_TEMP	Engine Temperature
ECU_10	BOSCH_AIR_TEMP	Air Temperature
ECU_11	BOSCH_THROTT_ANG	Throttle Angle
ECU_12	BOSCH_IGNIT_ANG	Ignition Angle
ECU_13	BOSCH_AIR_CHARGE	Engine load
ECU_14	BOSCH_INJEC_TIME1	Injection time 1
ECU_15	BOSCH_INJEC_TIME2	Injection time 2
ECU_16	BOSCH_LAMBDA1	Lambda Value 1
ECU_17	BOSCH_LAMBDA_2	Lambda Value 2
ECU_18	BOSCH_LAM_CONTR1	Lambda Controller 1
ECU_19	BOSCH_LAM_CONTR2	Lambda controller 2
ECU_20	BOSCH_FUEL_USED	Injected Fuel
ECU_22	BOSCH_GEAR	Gear Number
ECU_23	BOSCH_VBATT	Battery Voltage

Appendix A – Porsche Cup ECU Bridge pinout



Appendix B – Part numbers

Kit:

- ECU Bridge for Porsche GT3 Cup: **X90BGPCMA**
- SmartyCam with 2m CAN cable: **X90SMYCEC2**
- SmartyCam with 4m CAN cable: **X90SMYCEC4**

Optional:

- Roll bar kit: **X9KSSMC0**
- CAN cable with external microphone: **V02566100**