

AiM Manuale Utente

Configuration with Race Studio3 of Car/Bike optical Tire temperature sensor

Release 1.01



1

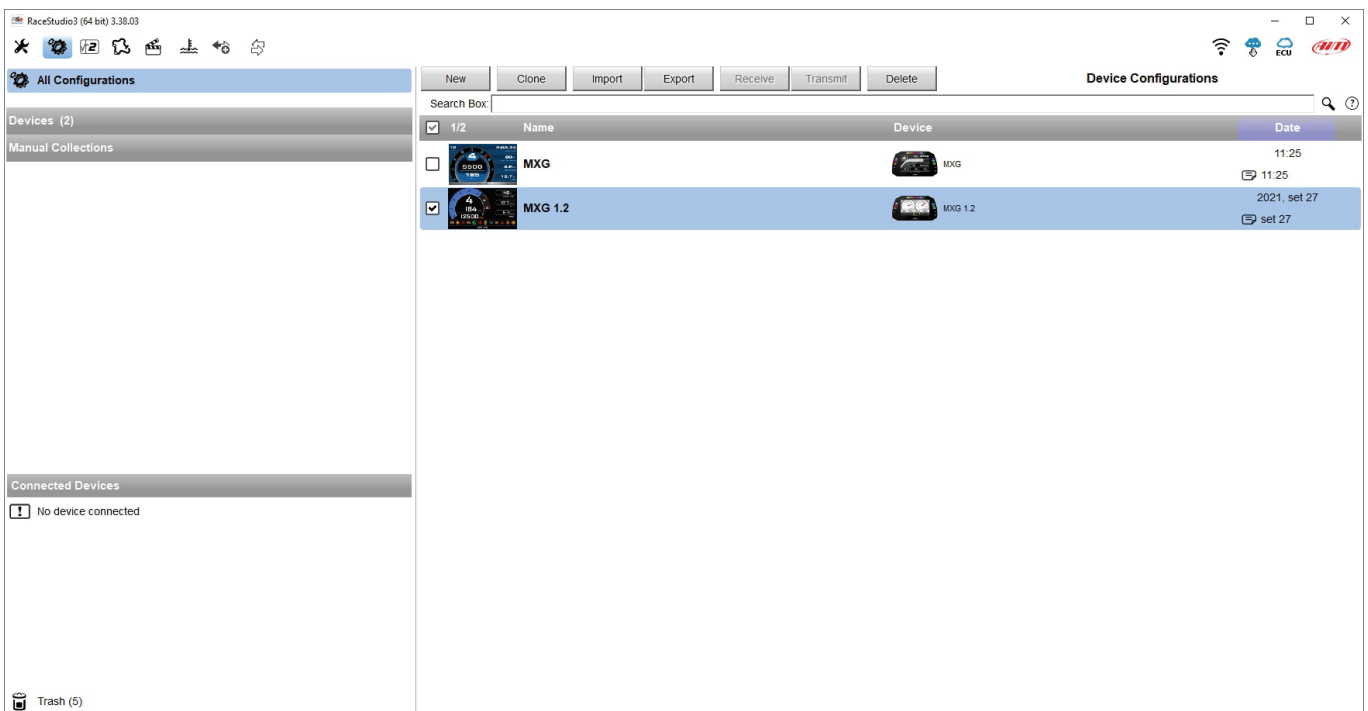
Introduction

Once the tire temperature sensor is physically connected to one of the channels of AiM device it has to be loaded in the related configuration using AiM configuration software. In this datasheet it is loaded using **Race Studio 3** software.

2

Setup with Race Studio 3

To load the sensor in the device configuration, keeping it connected to the PC and switched on, run the software and select the configuration to load the sensor on (MXG 1.2 in the example).



The software enters "Channels" layer: select the channel where to set the sensor on and fill in the panel that is prompted.

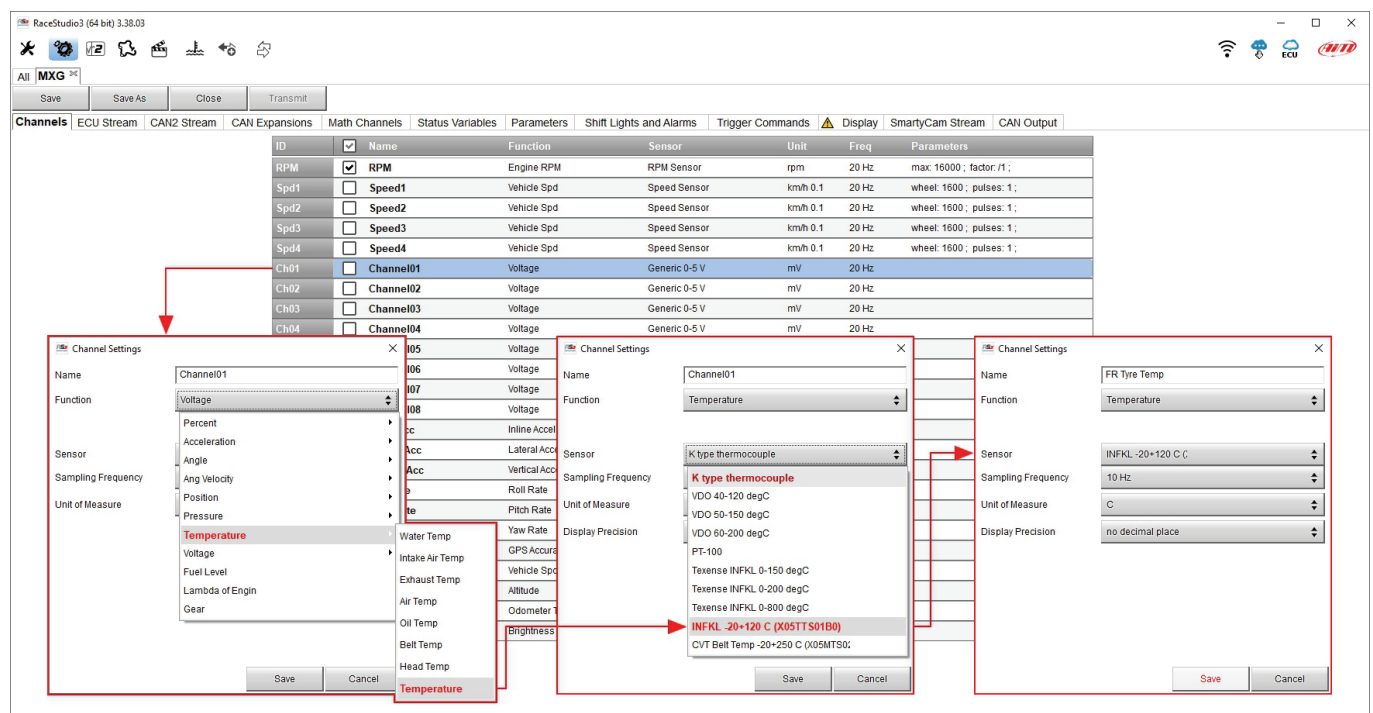
Please note: different AiM devices have a different channels management; this is why the configuration panel changes according to the device you are configuring.

AiM devices that manages the channels **as analog** are:

- SW4
- EVO5
- EVO4S
- MXL2/ MXG/MXS/MXS Strada
- MXm
- MXK10 Gen4
- MXK10 Gen5

To configure the sensor:

- click the channel where to set the sensor on
- "Channel setting" panel is prompted: select "Temperature ->Temperature" function
- the software sets the sensor as "K type thermocouple": **select** "INFKL-20+120C (X05TTS01B0)
- press "Save"



AiM devices that manages the channels **both as analog and as digital** are:

- MX2E
- MXS 1.2/MXP/MXG 1.2
- MXS 1.2 Strada/MXP Strada/MXG 1.2 Strada
- MXL2/ MXG/MXS/MXS Strada
- MXsl

To configure the sensor:

- click the channel where to set the sensor on
- "Channel setting" panel is prompted: select "Analog" management
- select "Temperature ->Temperature" function
- the software sets the sensor as "K type thermocouple": **select** "INFKL-20+120C (X05TTS01B0)
- press "Save"

