

AiM Infotech

Configuration with Race
Studio3 of AiM
Car/bike/kart
Exhaust gas thermocouple

Release 1.02



1

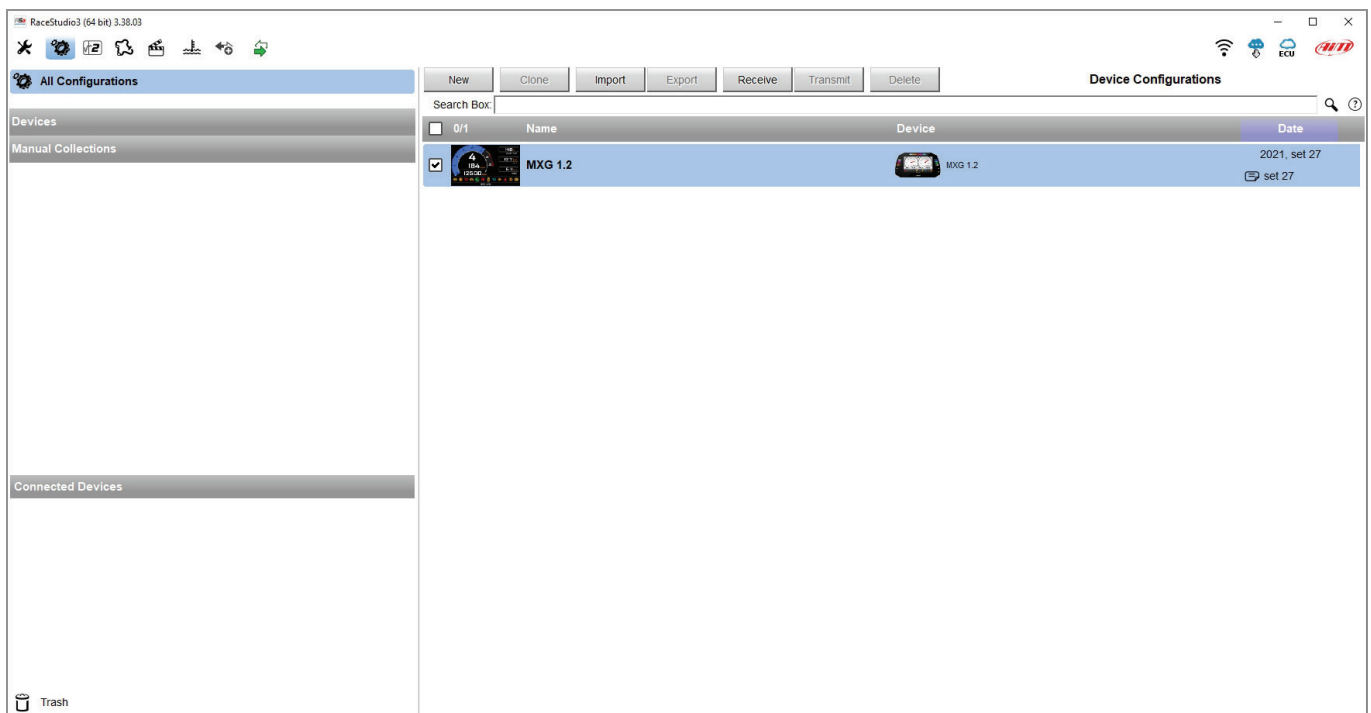
Introduction

When the exhaust gas thermocouple is physically connected to one channel of AiM device you need to load it in the related configuration using **Race Studio 3** software.

2

Race Studio 3 configuration

To load the sensor in the device configuration run the software and select the configuration where to load it (MXG 1.2 in the example below):



The software enters "Channels" layer: select the channel where to set the sensor on and fill in the panel that is prompted.

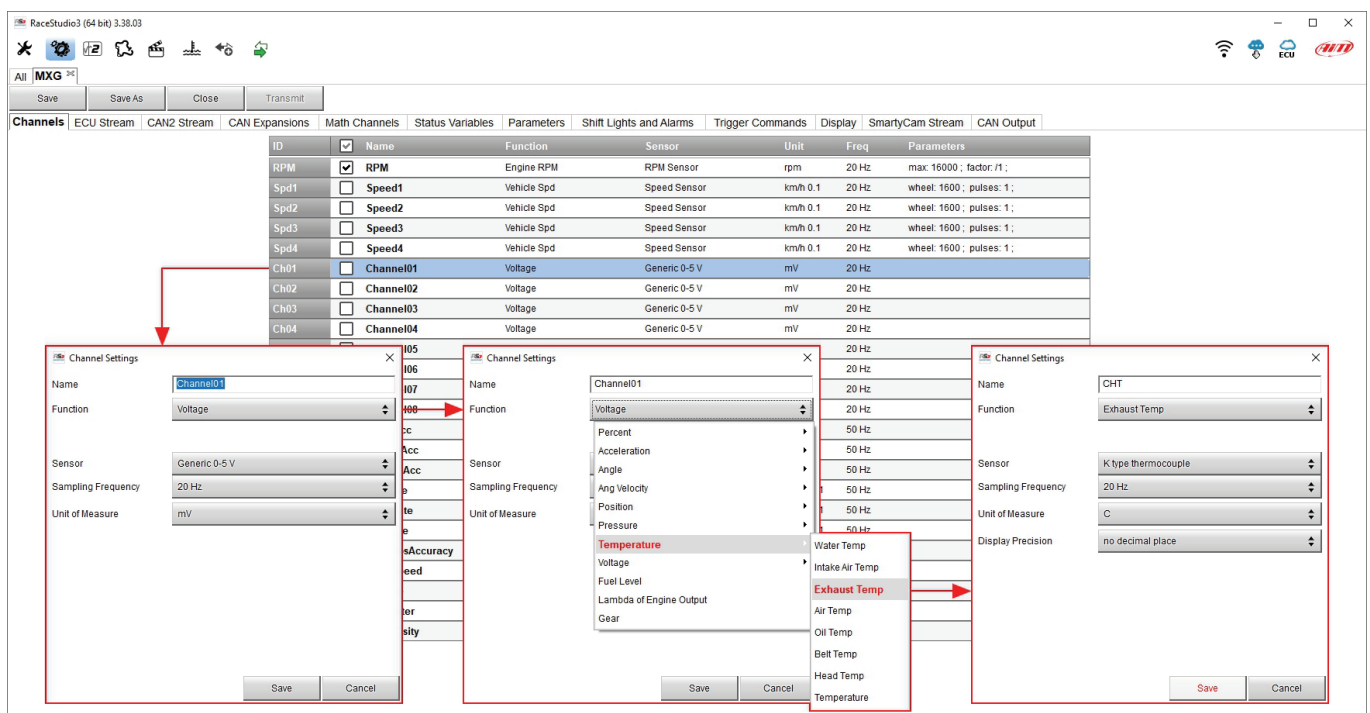
Please note: different AiM loggers have different channels management; this is why channels setting panel is different according to the device configuration you are loading the sensor in.

AiM devices that manage the channels only as **analog** are:

- SW4
- EVO5
- EVO4S
- MXL2/ MXG/MXS/MXS Strada
- MXm
- MXK10 Gen4
- MXK10 Gen5

To configure the sensor:

- click the channel you want to set the sensor on
- "Channel setting" panel is prompted: select "Temperature ->Exhaust Temp" function
- the software sets automatically on: "K type thermocouple"
- press "Save"



AiM devices that manages channels both as **analog and as digital** are:

- MX2E
- MXS 1.2/MXP/MXG 1.2
- MXS 1.2 Strada/MXP Strada/MXG 1.2 Strada
- MXL2/ MXG/MXS/MXS Strada
- MXsl

To configure the temperature sensor:

- click the channel you want to set the sensor on
- "Channel setting" panel is prompted: select "Analog" management
- select "Temperature ->Exhaust Temp" function
- the software sets automatically on "K type thermocouple"
- press "Save"

