



RSA

## “GPS Lap Insert” function

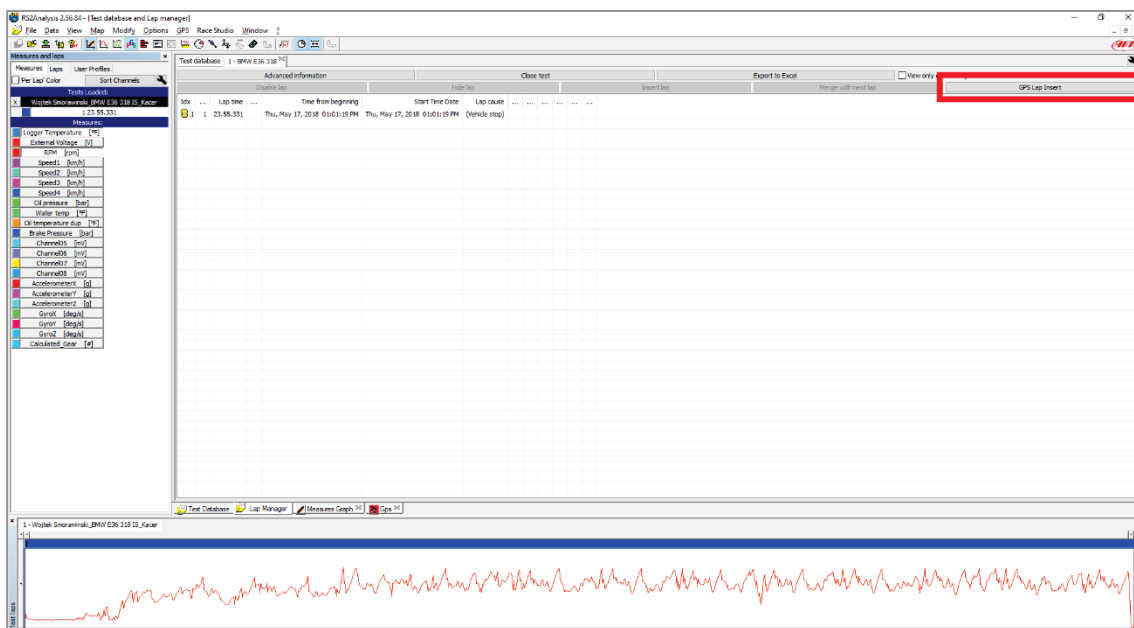
### Question:

After my session has been downloaded and opened through Race Studio Analysis, I notice that my system recorded a single lap time, without splitting it according to the start/finish line crossing: how can I recover each lap time?

### Answer:

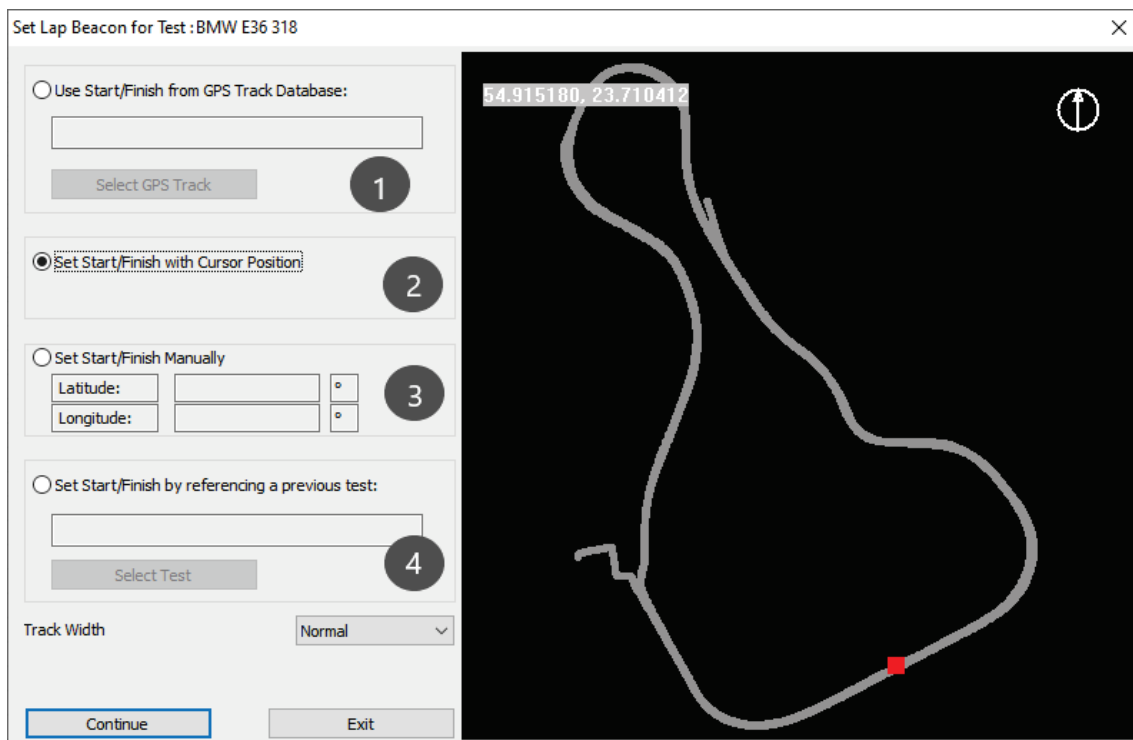
If, once your session has been downloaded and opened through Race Studio Analysis, lap times have not been cut correctly, it is possible to recover them from the “Lap Manager” tab, entering the “GPS Lap Insert” window, that allows to place a new GPS start/finish line (red box; following image).

**N.B.:** to be able to execute this operation, **GPS data must be available (.gpk file)**, since they are taken as reference to calculate new lap times, starting from the new start/finish line GPS coordinates.



**RSA**

The “Set Lap beacon for Test” window appears (following image), from which it is possible to set a new start/finish line in one of the ways explained below:

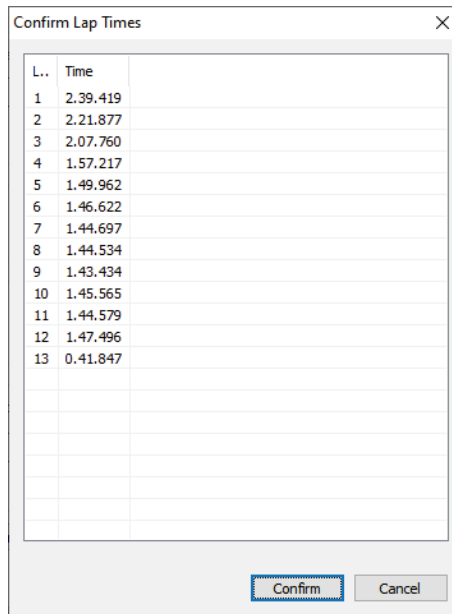


- “Use Start/Finish from GPS Track Database” **(1)**: it is possible to choose one of the nearby tracks from the GPS Manager database, so that its start/finish line is set as reference for this test.
- “Set Start/Finish with Cursor Position” **(2)**: start/finish line can be manually placed on the track moving the red square (previous picture).
- “Set Start/Finish Manually” **(3)**: new start/finish line GPS latitude and longitude can be manually added to the track, typing them in each relevant field (i.e.: motorboat competitions).
- “Set Start/Finish by referencing a previous test” **(4)**: selecting a start/finish line from a previous test, it is possible to have the same reference between the two sessions, so that they can be eventually compared.



RSA

Pressing "Continue", a preliminary lap times confirmation window appears (following image), to check each new lap time after this new start/finish line setting.



Pressing "Confirm", the "Lap Manager" window will show each lap details (following image), that will be represented in the Test Laps bar, as well (red box).

