



RS3

## Lap detection – start data recording conditions

---

**Question:**

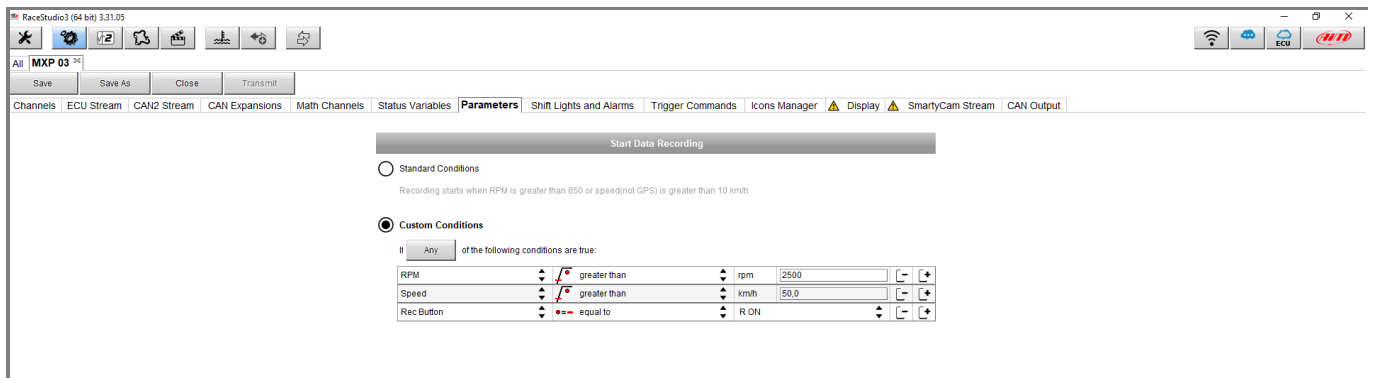
My AiM logger records not valid data (i.e.: warm-up phase, access to the track): how can I modify its recording strategies?

**Answer:**

To make the logger record only effective sessions, it is necessary that the events which make data recording start are correctly set through Race Studio 3, in the way explained in the following page.

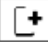
## RS3

- Run Race Studio 3, create a new configuration or open an existing one and enter the “Parameters” tab: the window shows the “Start data recording” area (following image).



- **Start data recording:** start data recording conditions can be of two types:
  - standard, selecting “**Standard Conditions**”. By default, AiM systems start recording data when RPM value exceeds 850 or speed (not GPS) exceeds 10 km/h.
  - custom, selecting “**Custom Conditions**”. After the device channels have been configured, it is possible to set them as reference for recording to start, when their conditions are verified.

Pressing the “All”/“Any” button, it is possible to choose to make recording start when all or just any of the conditions verifies.

To add/remove a condition from the list, click the  and  buttons respectively.

In the example from the picture below, an ECU communication protocol has been previously selected (“ECU Stream tab) and a pushbutton has been previously connected to one of the device inputs, which must be programmed as Digital Input (“Channels” tab): data recording starts when RPM value from ECU exceeds 2500 OR speed value from ECU exceeds 50 km/h OR when the pushbutton status is active (= “R ON”).