

Logo Management

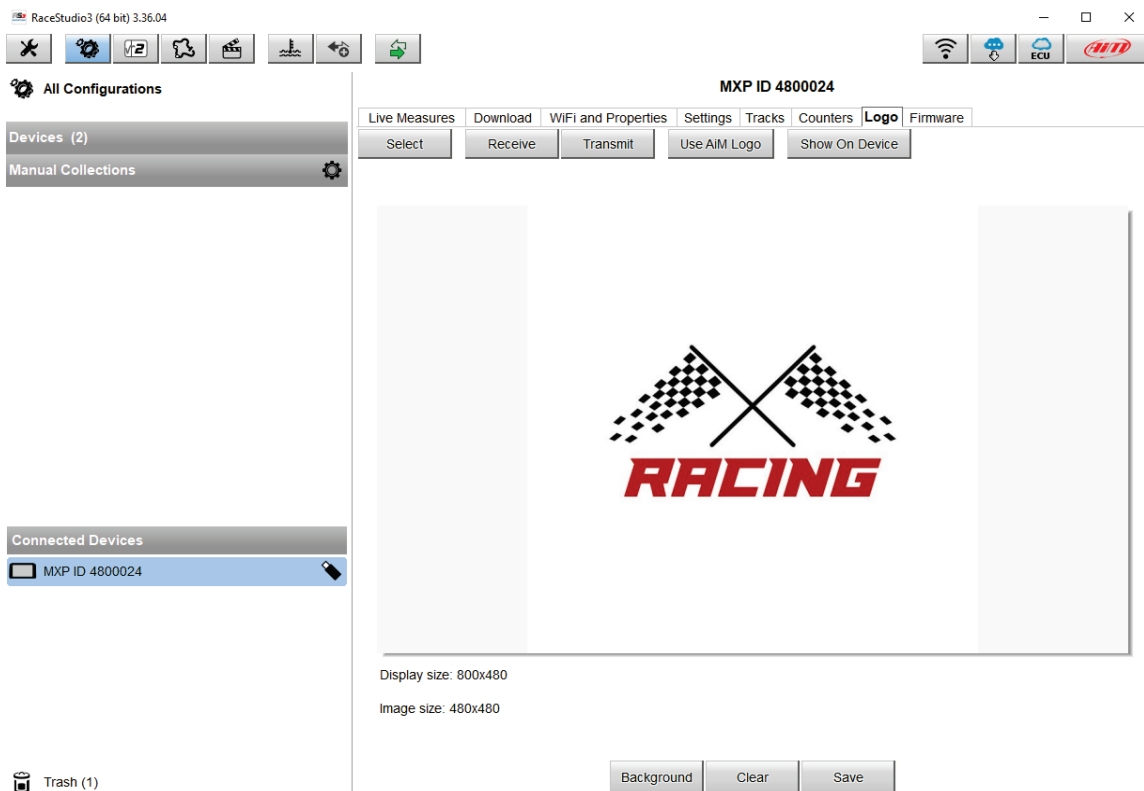
Question:

How can I configure a Logo on my TFT device?

Answer:

Can configure this operation via Race Studio 3 on all AiM devices by following the steps shown below.

After having connected your device to the PC, opening Race Studio 3, select your AiM dash from Connected Devices, through Logo TAB Management, you can change the logo that appears on the display when you turn your device on.



You can easily select a picture (JPEG or BMP) in your PC and transmit it to (or receive from) the device.